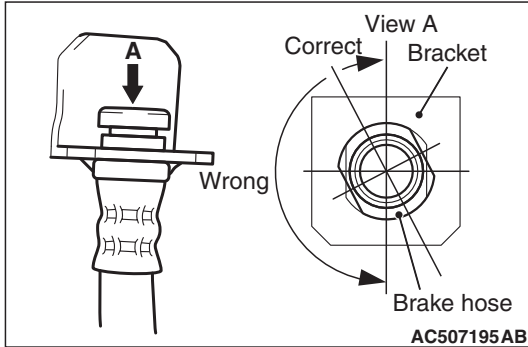


INSTALLATION SERVICE POINT

>>A<< BRAKE HOSE INSTALLATION

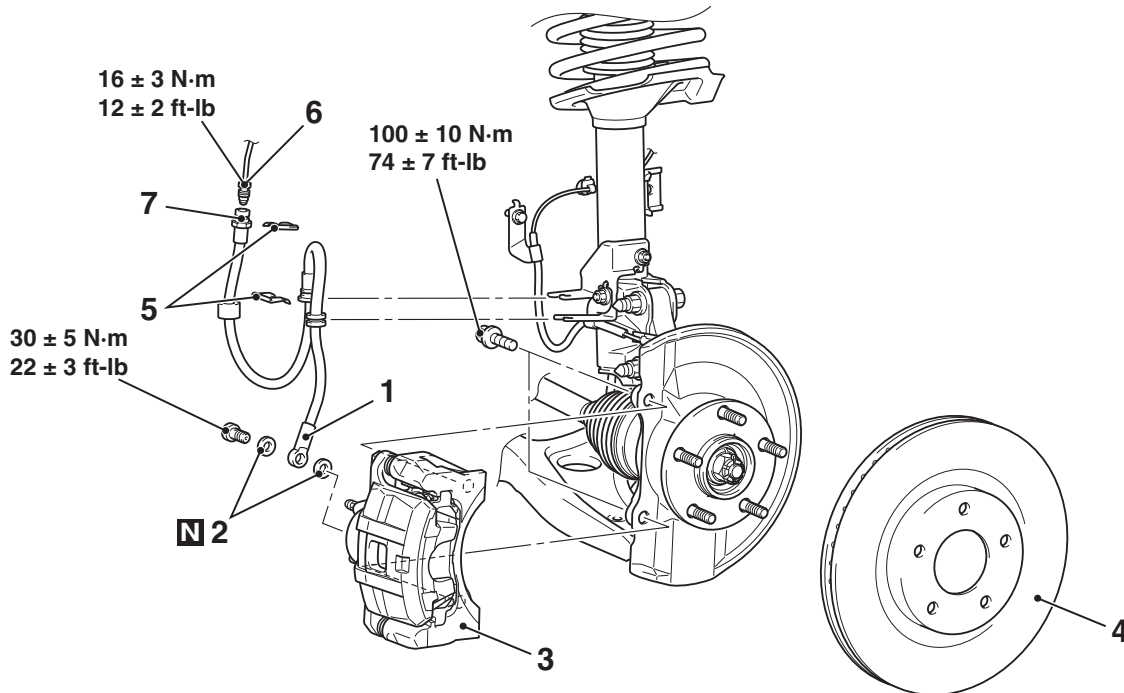
1. Pass the brake hose through the hole in the body-side bracket.
2. Install the brake hose to the brake caliper.
3. Install the brake hose at the two fixing points.
4. Twist the brake hose toward the lesser torsion between the brake hose and body-side bracket as shown in the figure, and fix it to the body-side bracket with a clip.



REMOVAL AND INSTALLATION <2.4 L Engine>

M1351006001477

<p>Pre-removal operation Brake fluid draining</p>	<p>Post-installation operation</p> <ul style="list-style-type: none"> • Brake fluid refilling and air bleeding (Refer to P.35A-18). • Brake disk run-out inspection/correction (Refer to P.35A-27).
--	--



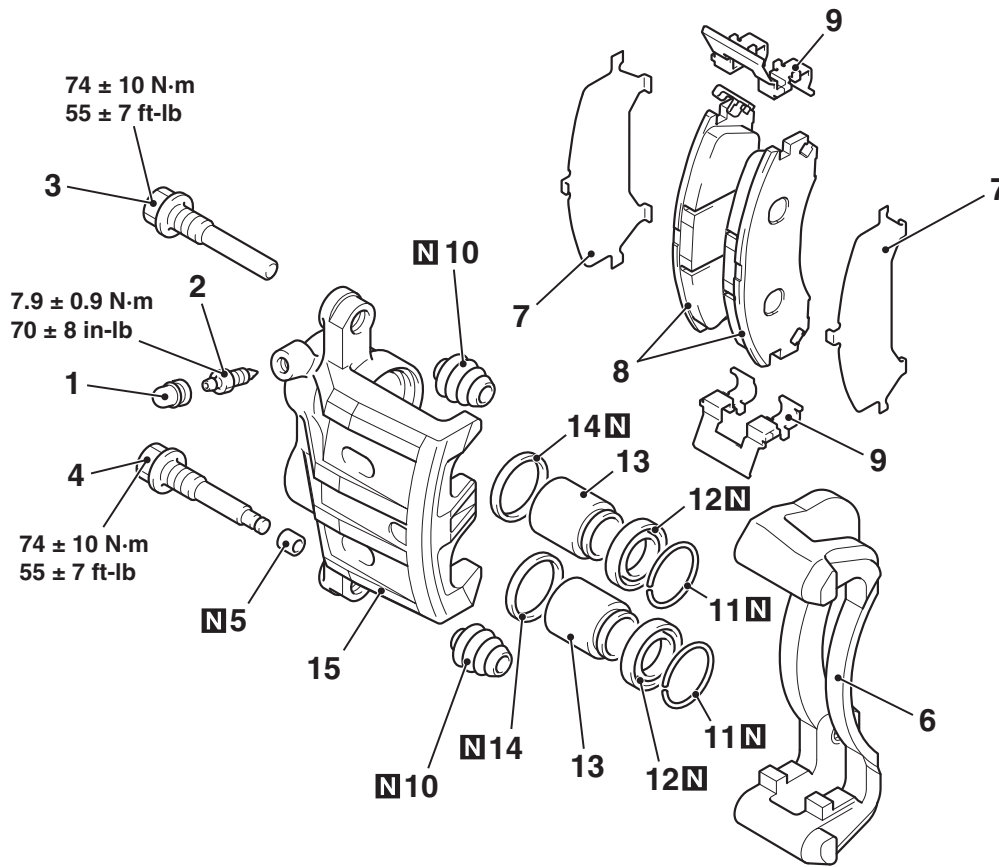
AC610142AC

- Removal steps**
1. Brake hose (brake caliper side) connection
 2. Gasket
 3. Brake caliper assembly

- Removal steps (Continued)**
4. Front brake disk
 5. Clip
 6. Brake pipe connection
 7. Brake hose
- >>A<<

DISASSEMBLY AND ASSEMBLY <2.0 L Engine>

M1351006201943



AC808475AB

	<p><Right side> <Left side></p>	
<p>Front brake caliper kit</p>	<p>Front brake shim set</p>	
	<p><Right side> <Left side></p>	<p><Right side> <Left side></p>
<p>Front brake caliper seal kit</p>	<p>Front brake clip set</p>	<p>Front brake pad set</p>

REAR DISC BRAKE ASSEMBLY

REMOVAL AND INSTALLATION <2.0 L Engine>

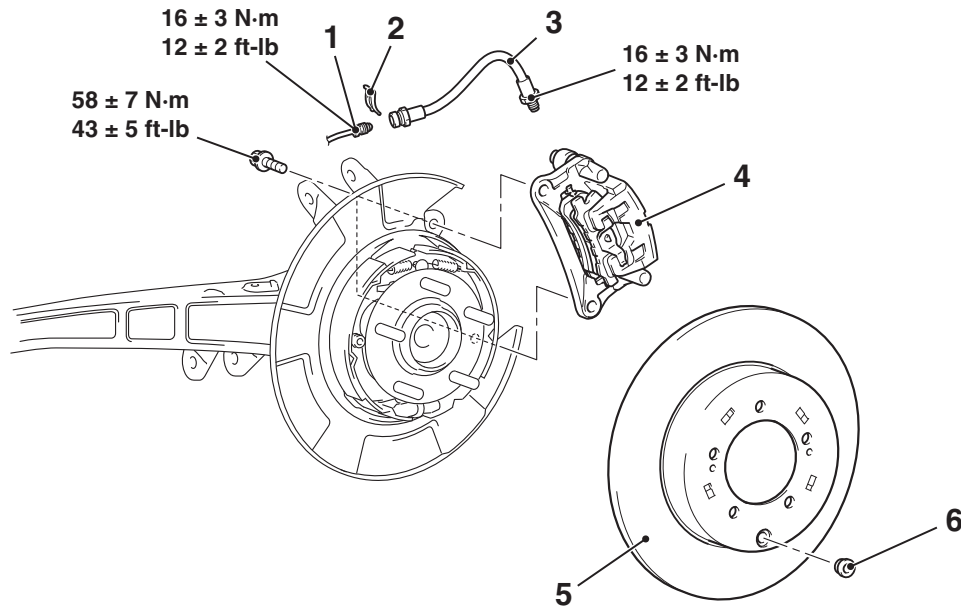
M1351007001180

Pre-removal operation

Brake fluid draining

Post-installation operation

- Brake fluid refilling and air bleeding (Refer to P.35A-18).
- Brake disk run-out inspection/correction (Refer to P.35A-27).
- Parking brake lining seating procedure (Refer to GROUP 36 -Parking Brake Lining Seating Procedure P.36-10).



AC800505AB

Removal steps

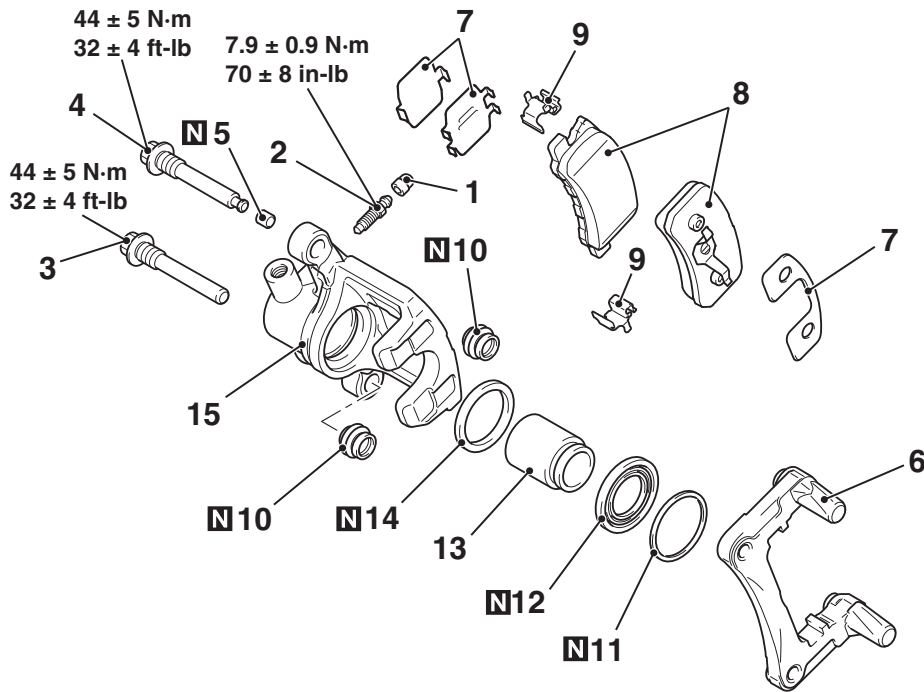
1. Brake tube (brake hose side) connection
2. Clip
3. Brake hose

Removal steps (Continued)

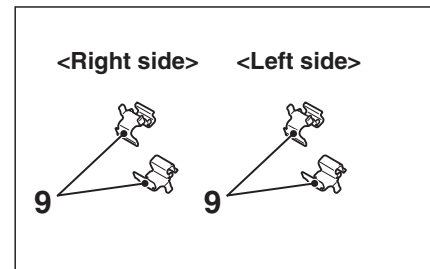
4. Rear brake caliper assembly
5. Rear brake disk
6. Plug

DISASSEMBLY AND ASSEMBLY <2.0 L Engine>

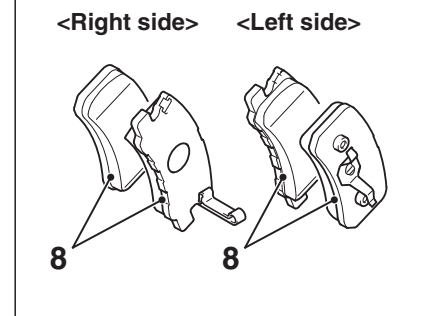
M1351007201399



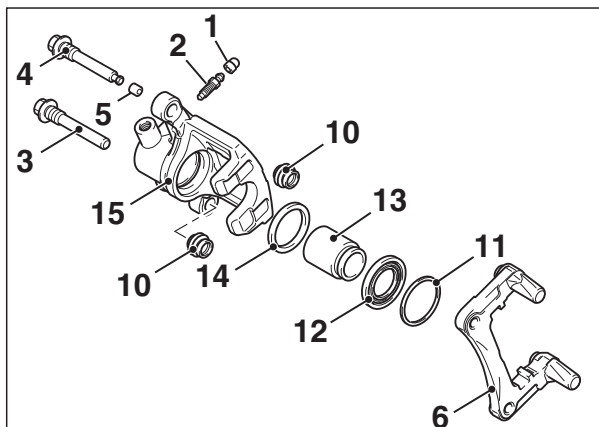
AC900736AB



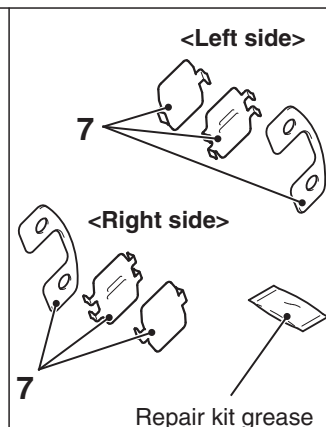
Rear brake clip set



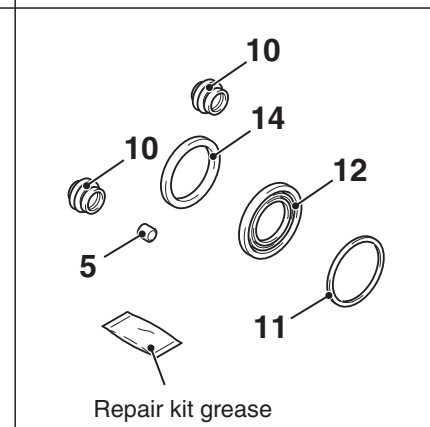
Rear brake pad set



Rear brake caliper kit



Rear brake shim set



Rear brake caliper seal kit

Disassembly steps

1. Bleeder cap
2. Bleeder
3. Guide pin
4. Lock pin
5. Bushing
6. Caliper support
7. Shim
8. Brake pad assembly
9. Clip
10. Pin boot
11. Boot ring
12. Piston boot
13. Piston
14. Piston seal
15. Caliper body

<<A>>

<<A>>

<>

NOTE:

- The brake pad assembly with wear indicator is installed only to the inner side of the brake disk of the left-side brake at factory.
- As for the accessory pad set, the brake pad with wear indicator has been established to the inner side of the brake disk on both right side brake and left side brake.
- Install the brake pad assembly (with wear indicator) to the inner side of the brake disk, making sure that the wear indicator is located on the bottom.