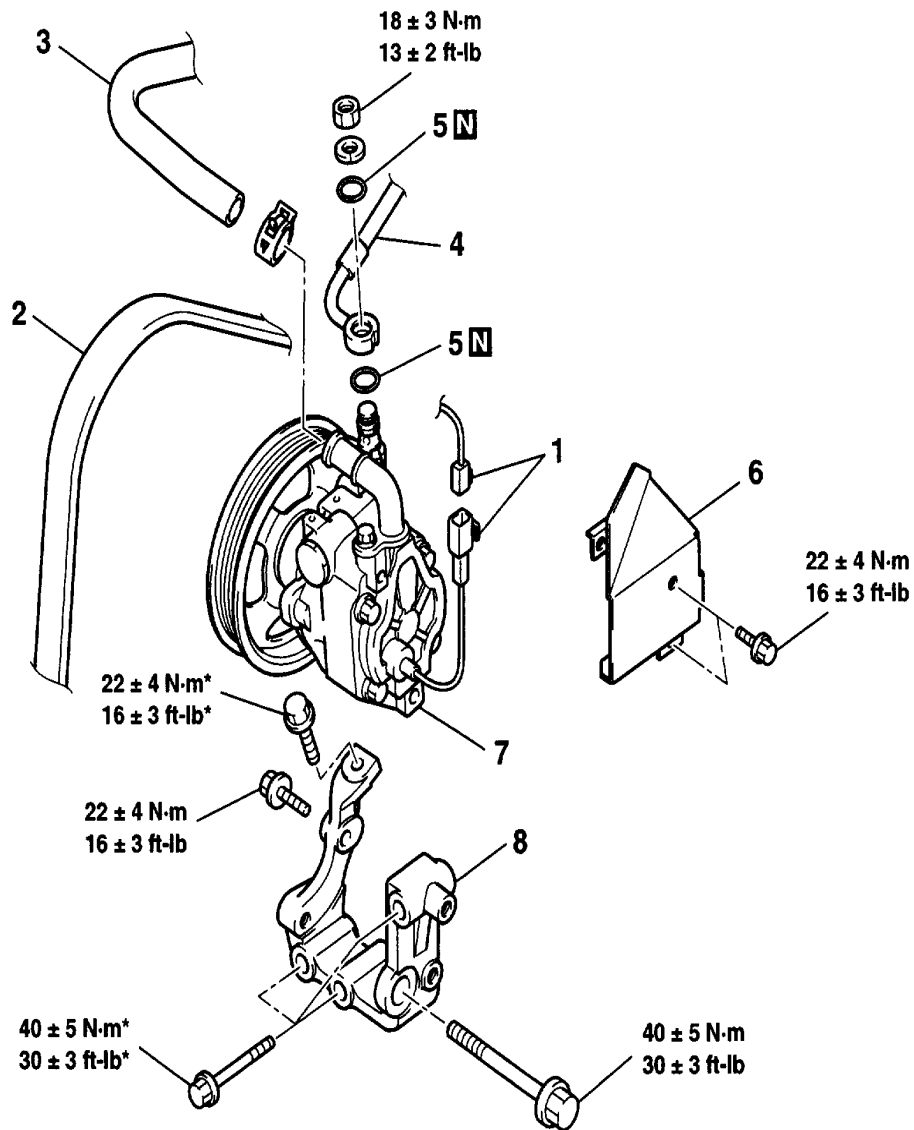


2003 Mitsubishi Lancer Evolution L4-2.0L DOHC Turbo

Vehicle > Steering and Suspension > Steering > Power Steering > Power Steering Pump > Service and Repair > Removal and Replacement

<p>Pre-removal Operation</p> <ul style="list-style-type: none"> • Power Steering Fluid Draining 	<p>Post-installation Operation</p> <ul style="list-style-type: none"> • Power Steering Fluid Supplying and Bleeding • Drive Belt Tension Adjusting
---	---



AC211828 AB

REMOVAL STEPS

1. PRESSURE SWITCH CONNECTOR
2. DRIVE BELT
- >>B<< 3. SUCTION HOSE
- >>B<< 4. PRESSURE HOSE
- >>A<< 5. O RING

REMOVAL STEPS (Continued)

6. HEAT PROTECTOR
7. OIL PUMP ASSEMBLY
8. POWER STEERING PUMP BRACKET